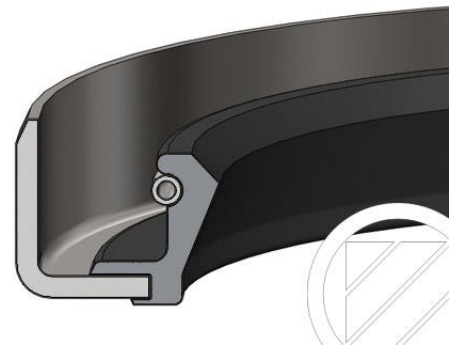


# WB



Rotary shaft seal in standard design with a metal outer surface and a spring-energised sealing lip made of elastomer. In addition, the standard model is available with a protective lip (WBS) on the air side.

## DESCRIPTION

**Product group:** Rotary shaft seal

**Design: B =** outer surface metal

**Seal material:** NBR 70

**Colour:** black

**Stiffening ring:** non-alloy steel according to DIN EN 10139

**Tension spring:** non-alloy spring steel according to DIN EN 10270-1

## MEDIA

Good chemical resistance to diverse mineral oils and greases.

## AREAS OF APPLICATION

Sealing of rotating machine elements such as shafts, hubs and axles.

## FUNCTION

The WB is a single-action rotary shaft seal for rotating or pivoting shafts with optional protective lip sealing action (WBS) on the side facing away from the medium, against dirt accumulation from the outside. Tight and accurate fitting is achieved by the metal outer surface. The WB model has limited sealing action with thin fluid or gaseous media and with split housings. To guarantee a high degree of static sealing on the outer surface, better surface treatment of the housing bore is required or an additional coat of paint should be applied to the outer surface.

## OPERATIONAL APPLICATION LIMITS

Pressure (Mpa/bar):  $\leq 0.05/0.5$

Temperature (°C): -40 to +100

Peripheral speed (m/s):  $\leq 12$

## INSTALLATION

Suitable tools should be used for installation. It is recommended that the installation housing is designed to provide the rotary shaft seal with axial support.

## REMARKS

The nominal widths mentioned on the following pages represent the standard dimensions. They are generally in stock or can be delivered at short notice.

Other dimensions and different designs, e.g. double dust protection lip, spiral on the sealing lip, spring or metal insert made of other steel grades can be produced as well as all kinds of special designs. WB/WBS are available with an additional coat of paint. Minimum quantities may be obligatory for dimensions outside of the standard.

