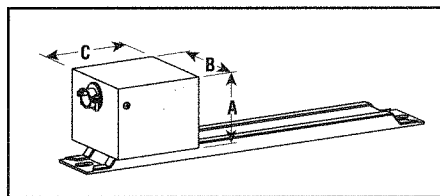


Strip & Ring Heaters Accessories

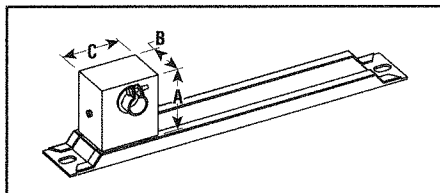
- Protective Terminal Covers
- Shims
- Ceramic Post Terminal Insulators
- Porcelain Hi-Temp Insulation

Protective Terminal Covers — Types OT, PT, SE, WS and Seamless Types SSE, SSEM, SSNH and SSNHM. Helps guard terminals from spillovers, dripping. Removable sheet-metal cover, with Bx fitting, is shipped separately.

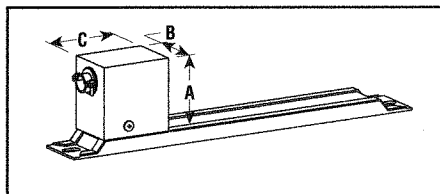
OT-AC-1 (PCN 129242)



PT-AC-1 (PCN 255724)



SE-AC-1 (PCN 256727)



Protective Terminal Covers

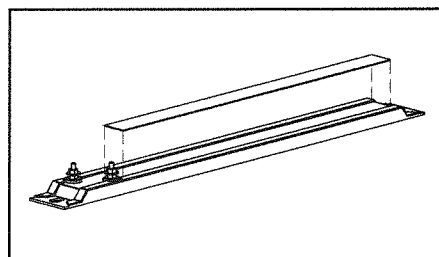
Model	Dimensions (In.)		
	A	B	C
OT-AC-1	2	2-1/2	2-1/2
PT-AC-1	1-7/8	1-1/8	1-3/4
SE-AC-1'	2-1/16	1-1/2	2

1. Used on type WS (mounted sideways).

Shims

Shims — Types OT, PT, S, SE and TH. Provide same advantage as flush-top construction and can be used with stock heaters. Shims are 0.031" thick, 29/32" wide and lengths to fit heater.

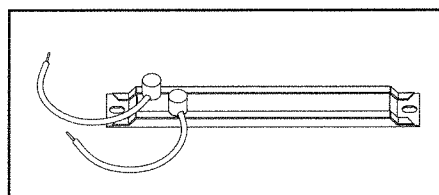
Shims



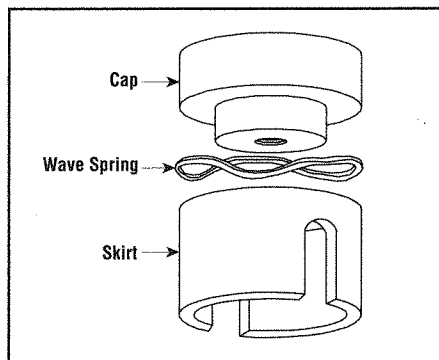
Ceramic Post Terminal Insulators

Ceramic Post Terminal Insulators — All types except NS and SN. Use with insulated wire to help protect against electrical shock. Wires can leave terminal at any angle.

Ceramic Post Terminal Insulators



PCN 259805 (Nickel plated steel hardware)
PCN 255732 (Stainless steel hardware)



Porcelain Beads

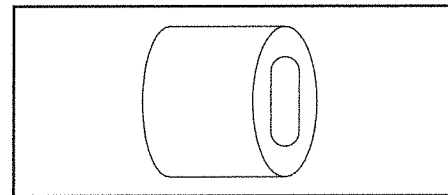
Bead Size	Dimensions (In.)			Wire Size Solid	No. Beads Per Ft.	No. Beads (Pieces)	PCN
	A	B	C				
2	0.17	0.068	0.17	14 B&S	88	4,535	263880
3	0.2	0.092	0.2	12 B&S	69	2,900	263900
4	0.26	0.156	0.26	8 B&S	51	1,500	263927
5	0.33	0.124	0.33	10 B&S	45	650	263943
6	0.4	0.156	0.4	8 B&S	38	360	263960

To Order — Specify PCN and quantity.

Porcelain Hi-Temp Insulation

Porcelain Hi-Temp Insulation —

For insulating buss bars spec. 51 porcelain insulators 1/2 L x 13/16" W with 1/8 x 9/16" slot. 95 pieces per lb.



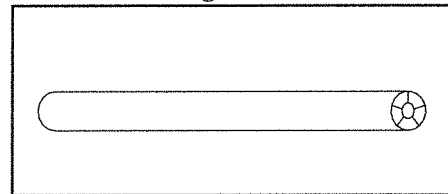
To Order — Specify pounds, PCN 269780 and porcelain insulators.

For Insulating Bare Wires — Two types available:

1. **Porcelain Tubing** — 3/8" O.D. x 1/8" I.D. x 6" L (may be broken for shorter lengths). Suitable for 10-gauge or smaller; 8-gauge takes No. 6 porcelain bead.

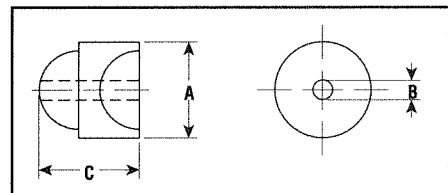
To Order — Specify quantity and PCN 263863.

Porcelain Tubing



2. **Porcelain Beads** — Listed in table below. Can be used when wiring does not permit straight tubing.

Porcelain Beads



3. When selecting porcelain beads for stranded wire, use next larger gauge wire and use bead for that size (i.e., 10 gauge stranded wire requires a No. 6 bead).