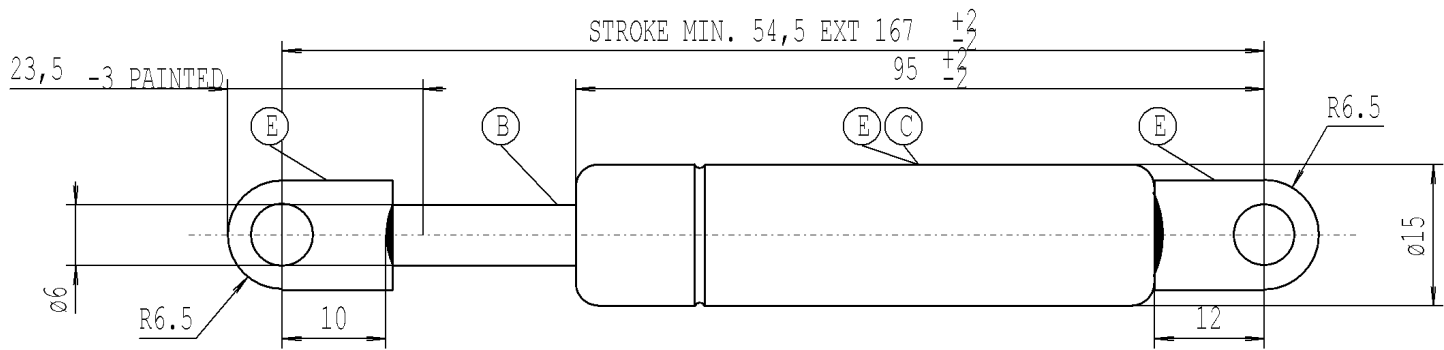
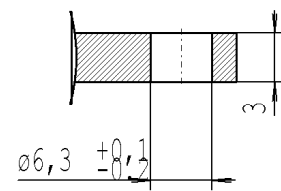
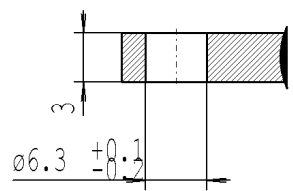


Intended for internal use and customer



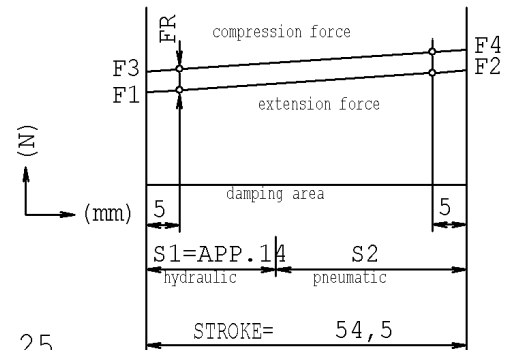
STABILUS LIFT-O-MAT

NICHT OEFFNEN HOHER DRUCK
DO NOT OPEN HIGH PRESSURE
STABILUS STANDARD



We reserve all rights to this drawing, to any patents or patent registrations related hereto, and to the duplication, retransmission by third parties and misc. use. Any use of this drawing is not permitted without the written consent of STABILUS.

- The warning label must not be removed or obscured.
- Extension speed VS2=0,08-0,35 (m/s)
- compression and extension forces measured acc. to STAB-Spec. 10009033
- Extension speed measured according to STAB-Spec. 10005451
- Spring test with piston rod downwards
- Protect piston rod from dirt, paint and damage
- Disposal acc. to STAB-Spec.10009375
- Drawing not true-to-scale
- Observe installation instructions according to STAB-Spec. 10005593
- Permissible operating temperature range -30°C to +80°C
- the Gas Spring must not be mechanically modified or damaged.
- Installation: With piston rod down to ensure best possible durability performance of the gas spring.



$X = F2 / F1 = 1,25$
 $FR_{max} = F3 - F1$

B | Nislid black
C | print white
E | black painted

Unregistered Copy
Print-out is not subject to the modification service

STABILUS

Modifications in favour of technical process reserved

Forces (statically measured)

F1 (N)	F4 max (N)	FR max (N)
extension force 300 ±15	compression force 470	friction 50

CHANGE	NEW	
	OLD	
	CHG. NO.	
	NAME	
	NO.	

DIMENSIONS WITH- OUT TOLERANCE	LIFT-O-MAT
+/-1	03 01 0613 10 054

DRAWING	CHECKED
DATE 12.07.2000	NAME Wendling
Document No. 10014373	
7339VT	E